

CHRISTIE'S

2022 Sustainability Summary

- Christie's is **on track to achieve sustainability goals to reduce emissions by 50%** and achieve net zero by 2030
- Relationship between business growth revenue and greenhouse gas emissions improved through **behaviour change and collaborations**
- Reduced our total emissions since 2019 by **37%**
- Compared to 2019, we have **made progress in every carbon emissions category we measure**, with the exception of IT, which needs more accurate methodology to assess the real impact





Cosmic Cavern, © Kenny Scharf, 2022
LA show, packed by Crozier, shipped to London via sea freight

Crozier's Environmental Credentials

Iron Mountain have 20 environmental goals in total

1

Tree planted for every crate

2040

Carbon neutral

100%

Of Crozier buildings are retrofit, minimizing environmental impact

EV100

Members with commitment to accelerate the transition to EVs by 2030.

1%

Landfill (recyclable & recoverable)

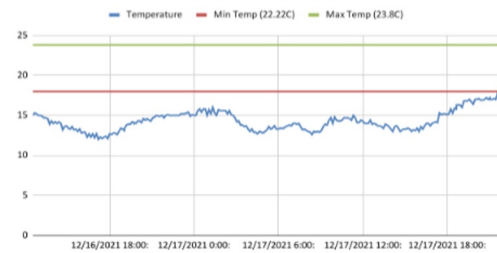
90%

Renewable energy corporate wide achieved by 2025

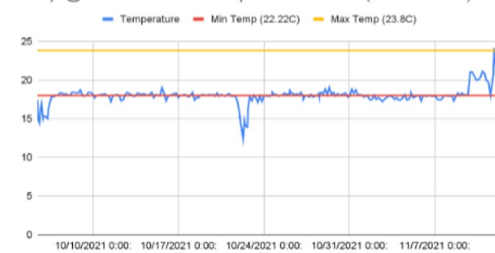
Shipping

Temperature Comparison

Temperature Air Shipment UK-US 16-17 Dec 21



Temp @ Crate 1 - Reefer Shipment 2 UK-NY (10/5-11/9/21)



- **Sea freight** provides an **80% reduction in carbon emissions** compared to air freight
- Data shows the conditions for sea freight are favourable (**temperature, humidity, stability**)
- Predict a **rise in sea freight** as shipping and fair schedules are synced
- Positive engagement with **Insurers** on **data-driven risk controls**




CRUZIER


CRUZIER Collaborating to Transform the Art Ecosystem



The New York Times
Mindful of Its Impact on the Planet, the Art World Aims for Sustainability



THE ART NEWSPAPER

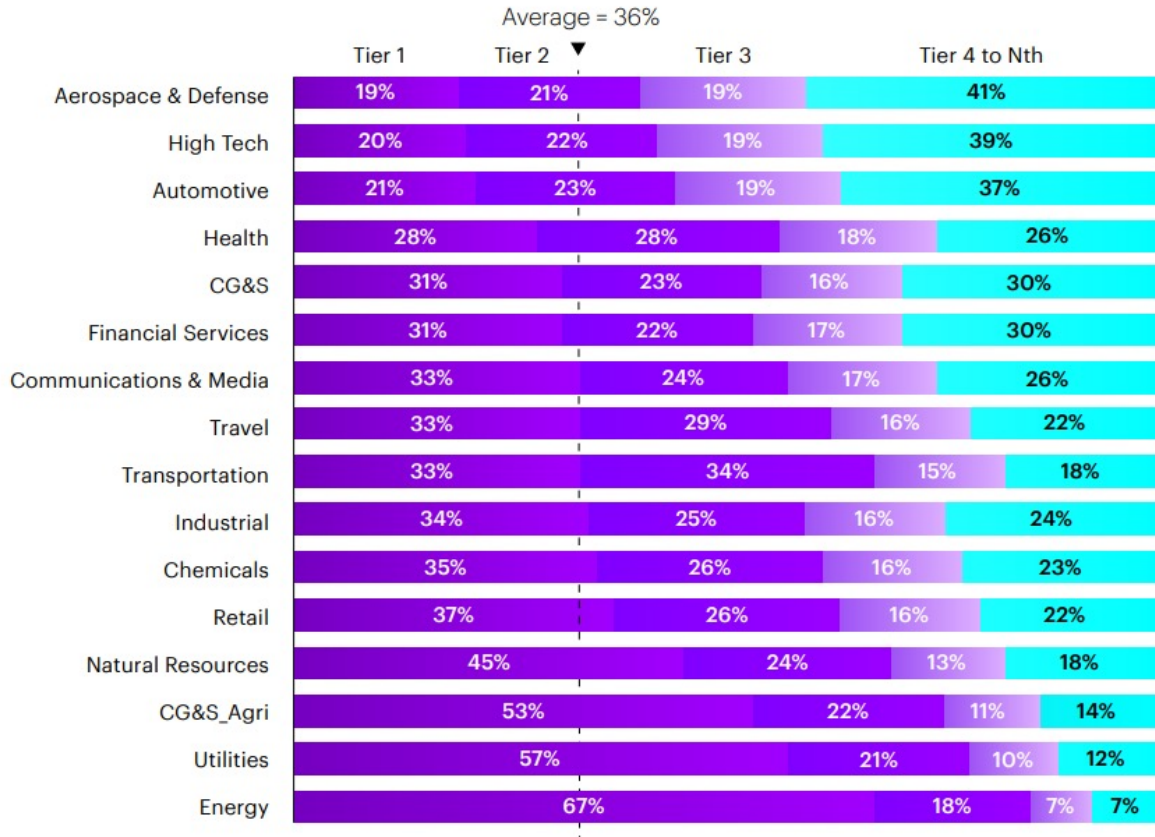


Green is the New Black // Blog
The art industry needs a genuine sea change—in the shipping sense



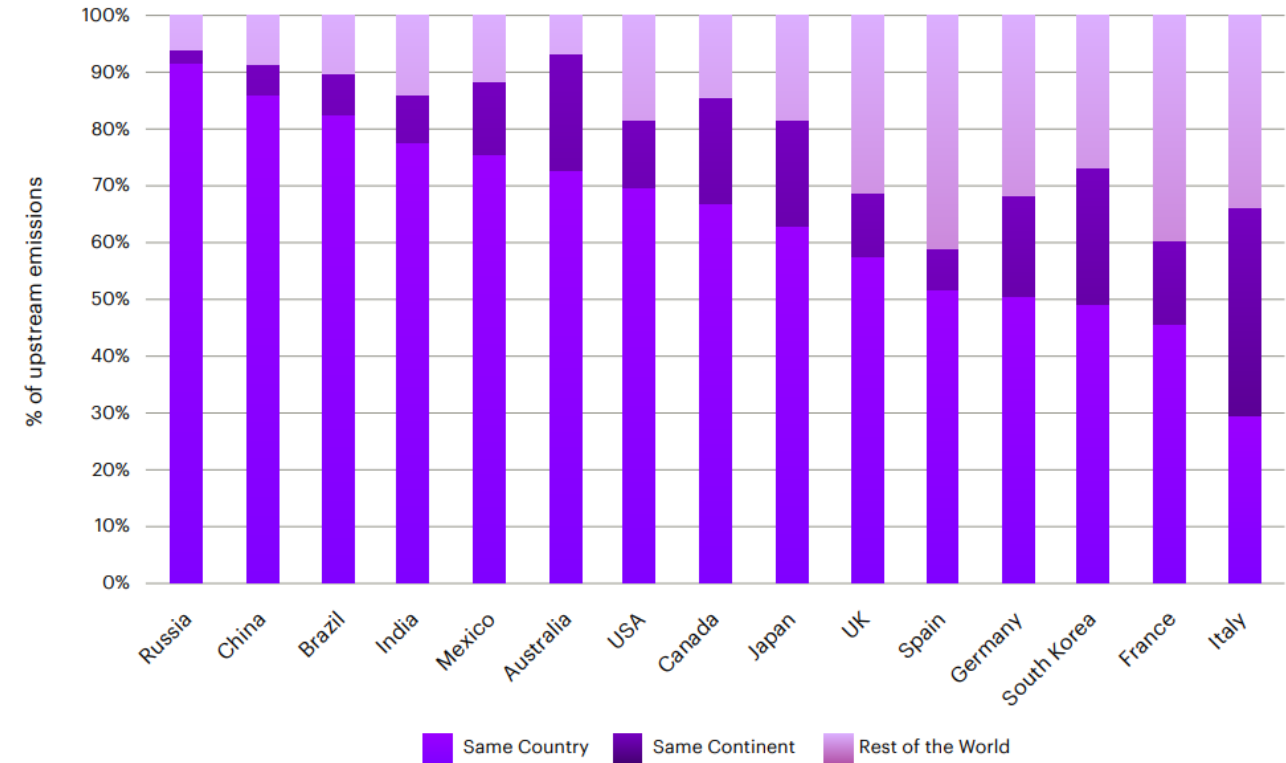
Indirect Value Chain (Scope 3) emissions account for 75% of companies' greenhouse gas emissions on average

Figure 1: Distribution of upstream emissions by supplier tier



Source: Accenture Research analysis based on EXIOBASE 3 dataset, 2022

Figure 5: Geographic source of upstream emissions by country



Source: Accenture Research analysis based on EXIOBASE 3 dataset, 2022

Future packaging in the Circular economy

Imagine a future...

Of authenticity and transparency in impact measurement

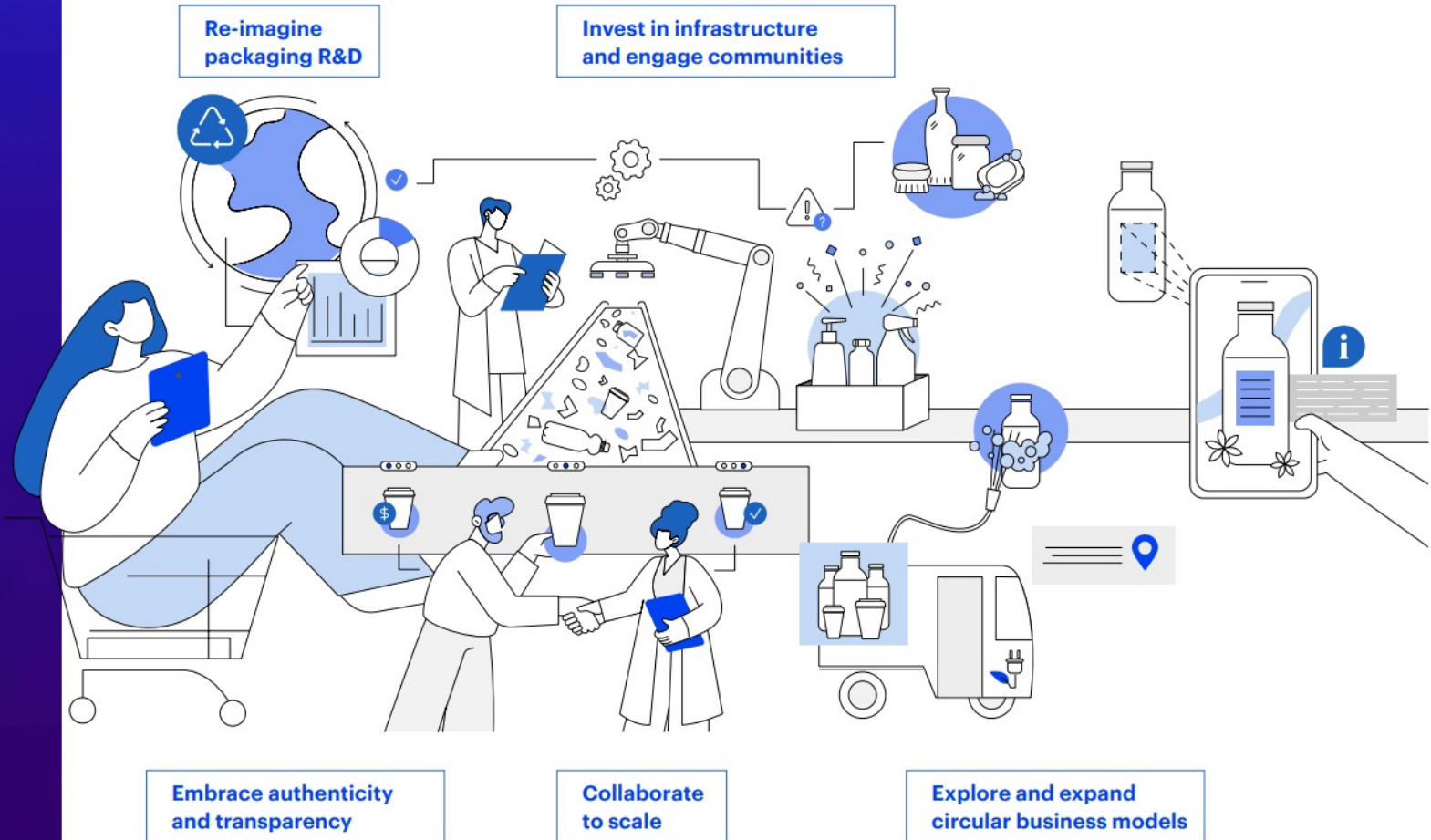
Where nothing is designed to go to waste

Where communities have the infrastructure to manage all plastics and packaging streams in support of human health

Where customers value digital experiences over traditional brand value in packaging

And invest in infrastructure and engage communities

Five actions for long-term success



GCC Updates 2023

- GCC's network is growing! Membership now stands at over 1,000, and last month the charity hit 10k followers on instagram.
- As part of GCC's ongoing #ClimateConsciousTravel campaign, and ahead of this year's edition of Frieze London, the coalition introduced its #TrainToFrieze initiative, encouraging members to reduce the environmental impact associated with travel to the fairs.
- Later this month we will launch our [Strategic Climate Fund](#) Campaign. Strategic Climate Funds (SCFs) are an alternative to conventional carbon offsetting, a system that is now widely regarded as [deeply flawed](#). The campaign will raise awareness of climate financing schemes with the aim of decisively re-orienting the arts sector away from carbon offsetting, once and for all.
- In May, GCC launched the 'Active Membership' initiative, with 'Active' status awarded to members who demonstrate that their organisation has implemented best practice in line with GCC guidance.
- Last week GCC published the results of its [Shipper Sustainable Services Survey](#), as part of the [Sustainable Shipping Campaign](#).



Sustainable Shipper Services Survey 2023

Survey Criteria		Participating Shipping Companies																
		Arta	Arteria	Atelier 4	Convelto	France	Hong Kong	N. America	Switzerland	UK	Crozier	Gander & White	Harsch	Masterpiece International	Momart	Mtec	Queens	Tokoney
1	Offer alternatives to air freight on key shipping routes	Green	Green	Green	Green	Green	Green	Green	Green	Green	Green	Green	Green	Green	Green	Green	Green	Green
2	Include comparative estimates of alternative freight options as standard on all quotes	Green	Orange	Orange	Orange	Red	Orange	Red	Red	Green	Orange	Orange	Red	Orange	Orange	Green	Orange	
3	Invoices include data required for CO ² reporting, consistently and in a standardised format	Green	Orange	Orange	Green	Red	Red	Red	Red	Orange	Red	Red	Green	Orange	Orange	Green	Orange	
4	Adheres to fine art insurers guidelines for sea freight	Orange	Orange	Green	Green	Green	Green	Green	Green	Green	Green	Green	Green	Green	Green	Green	Green	
5	Published sustainability statement, available online	Green	Orange	Green	Green	Green	Green	Green	Green	Green	Green	Green	Orange	Orange	Green	Green	Orange	
6	Working to implement packaging best practice and reduce waste	Orange	Green	Green	Green	Green	Green	Green	Green	Green	Green	Green	Green	Green	Green	Green	Green	
7	Offer rental of reusable crates and softpacks	Orange	Green	Red	Grey	Green	Orange	Orange	Orange	Orange	Green	Green	Orange	Green	Green	Green	Green	
8	Have a 'crate bank' reuse or 'take back' scheme	Red	Green	Green	Red	Green	Green	Green	Green	Green	Green	Grey	Red	Green	Red	Red	Red	
9	Promote deadlines for sea and road shipping well in advance of key art fairs and events	Red	Orange	Green	Green	Green	Green	Green	Green	Green	Green	Green	Green	Orange	Green	Green	Orange	
10	Offer 'low or no' emissions vehicles for last mile deliveries	Grey	Orange	Red	Grey	Green	Green	Green	Green	Green	Green	Red	Grey	Orange	Green	Red	Orange	
11	Promote Strategic Climate Funds over conventional 'offsetting'	Green	Red	Red	Green	Green	Green	Green	Green	Green	Orange	Red	Red	Orange	Orange	Green	Orange	

Status Key	In Action	In Progress	Not Offered	Not Applicable
	Service already available	Working to offer this service within 6 months of Sept. 2023	Unable to offer this service for the foreseeable future	Criteria not relevant to the shipper's business

This document is a collation of information that has been submitted voluntarily by the shippers themselves as part of GCC's Sustainable Shipping Campaign. It is not a certification of environmental sustainability for the companies represented. The information has been checked and queried by GCC to the best of its ability but GCC assumes in good faith that all the information provided is accurate. This resource was designed to allow GCC to highlight the positive work that is already being done by shipping companies in this area, whilst also making it easier for GCC members to identify freight services that are in line with the principles of environmental responsibility and, in doing so, help them to make informed decisions on freight services that are conducive to their climate targets. The survey was developed following a period of consultation with multiple shippers, galleries and environmental advisors. GCC would like to thank the participating companies for their contributions and invite further companies working in art freight to collaborate in this initiative.

GCC Active Members 2022

alexander levy gallery	DACS	Julia Rajacic	Quad Fine Art
Alexandra Mollof Fine Art	E-WERK	Kate MacGarry	Regen Projects
Arcual	Factory International	Liste	Roberts Projects
Art Basel	Fiona Grady	LON Gallery	Rokbox
Art into Acres	FRIEZE	Lucia Mendoza Gallery	Sadie Coles
ART2030	Galerie Kornfeld	Mariana Canepa Luna	Sam Talbot
Arta Shipping	Gander & White	Massimo De Carlo	San José Museum of Art
ARTAntide Gallery	Giulia Mattera	Max Andrews	Scott & Co
ARTCAN	Gladys Paulus	Midlands Art Centre	Shannon Carroll
ArtClear	GowithYamo	MOCA LA	Sim Smith
Arts Initiative Tokyo (AIT)	Guggenheim Bilbao	MOCT Show	Sotheby's Institute of Art
Asli Sonceley	Haley Mellin	Modern Art	Sutton Comms
Badr El Jundi	Hallett Independent	MoMA	TATE
Bow Arts	Hauser & Wirth	Nomad Exhibition	Temple Shipley
Camden Art Centre	Haverkamp Leistenschneider	Nottingham Contemporary	The CoLab
Cardi Gallery London	Horniman Museum	Office Impart	Thomas Dane Gallery
Carolina Grau	Hosfelt Gallery	Ortuzar Projects	UreCulture
Christie's	Ingleby	PONY	Victoria Miro London
Claire Milner	Jan Eric Visser	Quad Fine Art	Victoria Miro Venice
Contemporary Art Society	Jerwood Foundation	Regen Projects	Workplace Foundation
Cristea Roberts Gallery	Jessica Gath	Roberts Projects	Zhero